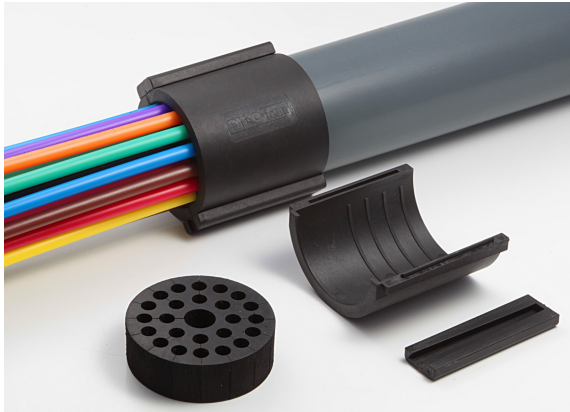


Divisible duct seals 63mm

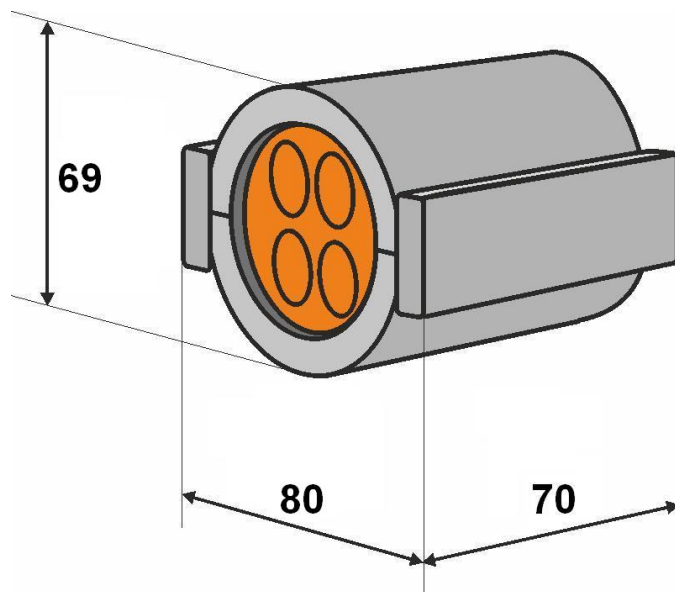


Suitable for gas and watertight sealing of 63mm HDPE ducts, which contain mini ducts and / or (fibre optic) cables. The modular system will guarantee easy installation of various different cable and duct configurations. Our system is divisible so can be applied at installation or afterwards. The rubber inserts can be custom designed for your specific needs and configuration and will contain (temporary) blind plugs to make the system more flexible at the installation site.

Features

- Gas and watertight $\geq 0,25$ bar.
- Suitable for retrofitting.
- Easy installation.
- Slim design.
- Includes cores of the recesses
- Other versions available upon request.

Specifications



Plastic scales	glassfibre reinforced
Closing key	glassfibre reinforced
Sealing plug	EPDM
Sealing	up to 0,25 bar
Pull-out force duct seal vs duct	$\geq 1200\text{N}$

More info

Contents

- Plastic scales (2 items)
- Closing keys (2 items)
- Synthetic rubber plug for cavity shapes (1 item)
- Illustrated installation instructions

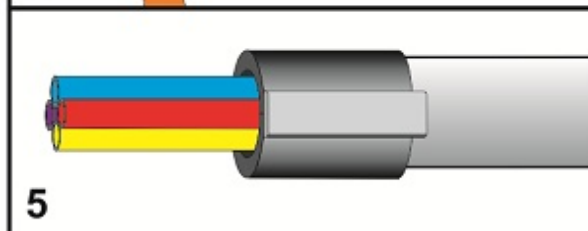
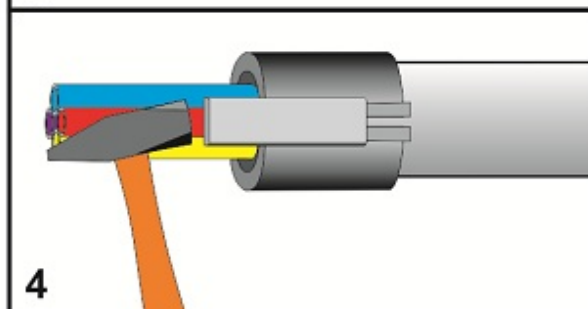
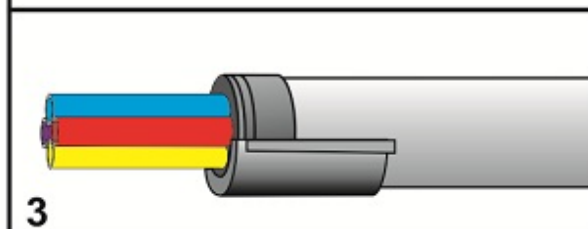
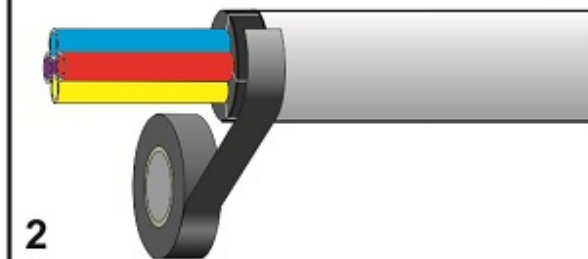
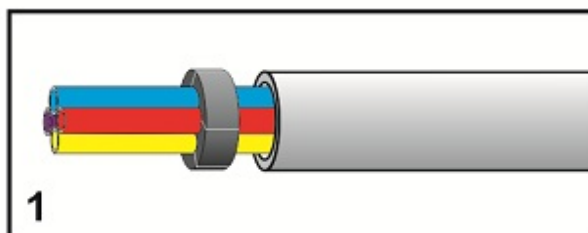
Divisible Duct Seal

FILOform

connect ▶ seal ▶ protect ▶

www.filoform.com +31 (0)345 588 220

UK : www.filoform.co.uk +44 (0)1189886873



Divisible duct seals 63mm

Products

Art.nr.	Product Name	Configuration	Duct outside diameter (mm)	Order unit
822664F	Duct seal HDPE 63/22x7mm+1x12 mm	22x7mm + 1x12mm	63	10 pcs/carton
822658F	Duct seal HDPE 63/24x7mm	24x7mm	63	10 pcs/carton
822653F	Duct seal HDPE 63/24x7mm+1x14 mm	24x7mm + 1x14mm	63	10 pcs/carton
822668F	Duct seal 63/15x10mm thin wall	15x10mm	63	10 pcs/carton
822675F	Duct seal HDPE 63/9x12mm	9x12mm	63	10 pcs/carton
822665F	Duct seal 63/12x12mm thin wall	12x12mm	63	10 pcs/carton
822654F	Duct seal HDPE 63/7x14mm	7x14mm	63	10 pcs/carton
822677F	Duct seal HDPE 63/6x16mm	6x16mm	63	10 pcs/carton
822689F	Ductseal HDPE 63/7x16 mm	7x16mm	63	10 pcs/carton
822686F	Ductseal HDPE 63/4x20mm	4x20mm	63	10 pcs/carton